

WAAS CH <b>78004</b> <b>W27A</b>	APP CRS <b>270°</b>	Rwy Idg <b>5500</b> TDZE <b>668</b> Apt Elev <b>679</b>
--	------------------------	---

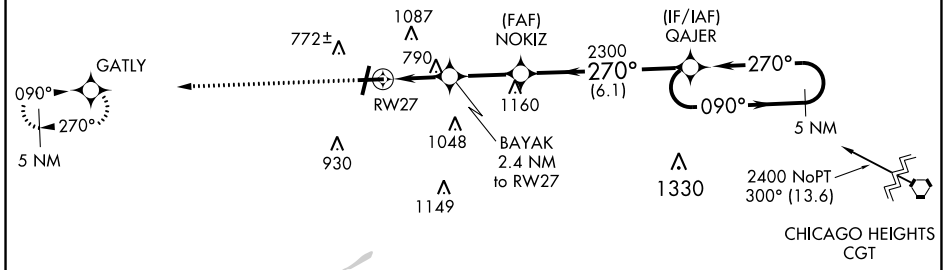
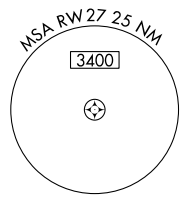
# RNAV (GPS) RWY 27

LEWIS UNIVERSITY (L.O.T)

**⚠** DME/DME RNP-0.3 NA. Visibility reduction by helicopters NA. When local altimeter setting not received, use Joliet Rgnl altimeter setting and increase all DA 29 feet and all MDA 40 feet, increase Cat C circling visibility ¼ mile.

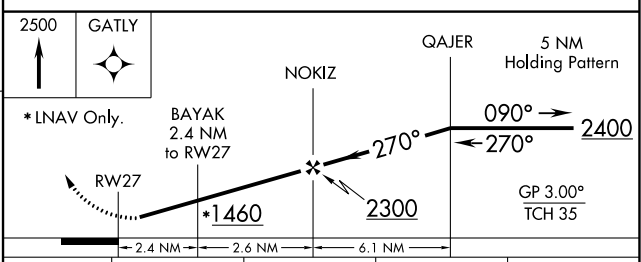
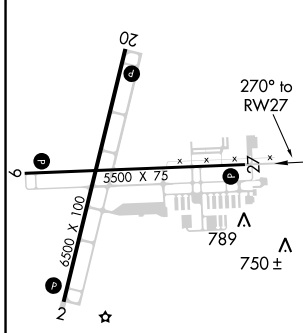
**⚠** MISSED APPROACH: Climb to 2500 direct GATLY and hold.

AWOS-3 <b>118.525</b>	CHICAGO APP CON <b>119.35 354.075</b>	UNICOM <b>122.8 (CTAF) 0</b>
--------------------------	--	---------------------------------



Procedure NA for arrivals at CGT VORTAC on airway radials 272 CW 356.

ELEV 679	TDZE 668
----------	----------



CATEGORY	A	B	C	D
LPV DA	934-1 266 (300-1)			
LNAV MDA	1120-1	452 (500-1)	1120-1¼ 452 (500-1½)	1120-1½ 452 (500-1½)
CIRCLING	1260-1	581 (600-1)	1260-1½ 581 (600-1½)	1440-2½ 761 (800-2½)

MIRL Rwy 2-20 and 9-27 **0**  
REIL Rwy 2, 20, 9, and 27 **0**

EC-3, 02 JAN 2020 to 30 JAN 2020

EC-3, 02 JAN 2020 to 30 JAN 2020