

WAAS Ch <b>93520</b> <b>W02A</b>	APP CRS <b>016°</b>	Rwy ldg <b>6500</b> TDZE <b>679</b> Apt Elev <b>679</b>
--	------------------------	---

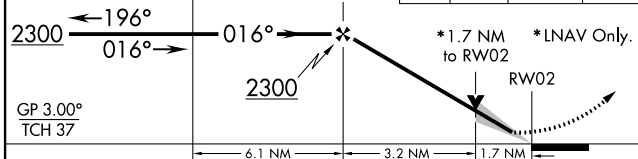
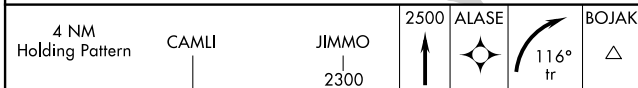
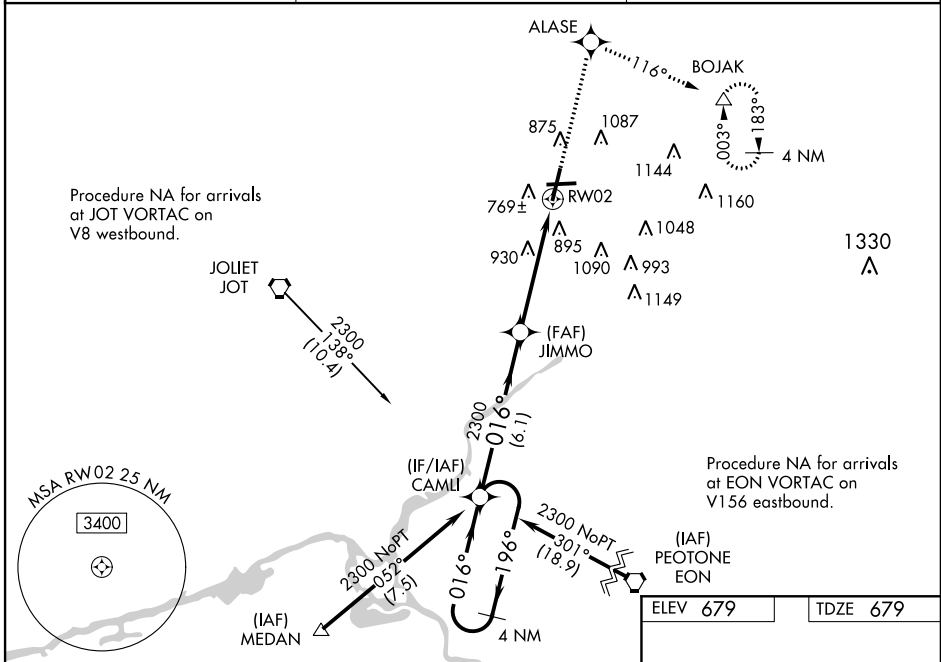
# RNAV (GPS) RWY 2

LEWIS UNIVERSITY (L.O.T)

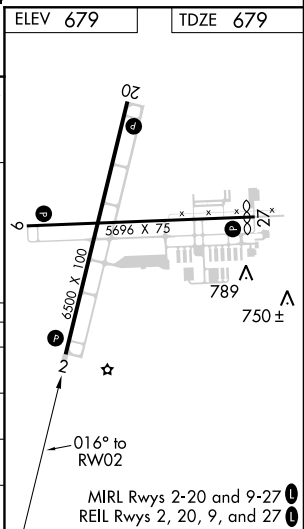
**▼** For uncompensated Baro-VNAV systems, LNAV/VNAV NA below -16°C (4°F) or above 47°C (116°F). DME/DME RNP-0.3 NA. Baro-VNAV and VDP NA when using Joliet Rgnl altimeter setting. When local altimeter setting not received, use Joliet Rgnl altimeter setting and increase all DA 29 feet and all MDA 40 feet, increase LNAV Cat C and D and circling Cat C visibility ¼ mile.

**MISSED APPROACH:**  
Climb to 2500 direct ALASE and right turn on track 116° to BOJAK and hold.

AWOS-3 <b>118.525</b>	CHICAGO APP CON <b>119.35 354.075</b>	UNICOM <b>122.8 (CTAF) 0</b>
--------------------------	--	---------------------------------



CATEGORY	A	B	C	D
LPV DA		879-¾	200 (200-¾)	
LNAV/VNAV DA		1256-2	577 (600-2)	
LNAV MDA	1240-1	561 (600-1)	1240-1½ 561 (600-1½)	1240-1¾ 561 (600-1¾)
CIRCLING	1260-1	581 (600-1)	1260-1½ 581 (600-1½)	1440-2½ 761 (800-2½)



EC-3, 26 MAY 2016 to 23 JUN 2016

EC-3, 26 MAY 2016 to 23 JUN 2016